 **Peso de la grúa sin tren de transporte y sin lastre / Dead weight without transport axles and without ballast / Konstruktionsgewicht ohne transportachse ohne ballast / Poids de construction sans essieux et sans lest / Peso della gru senza assali e senza zavorra**

15 Hp (11Kw) INV  
400V 50-60Hz  
H,B,G, 28 Ø10mm

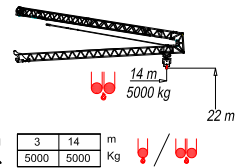
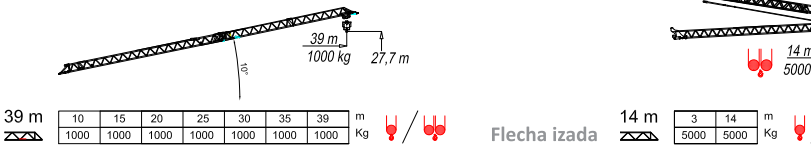
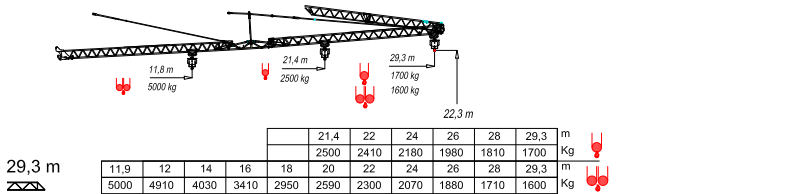
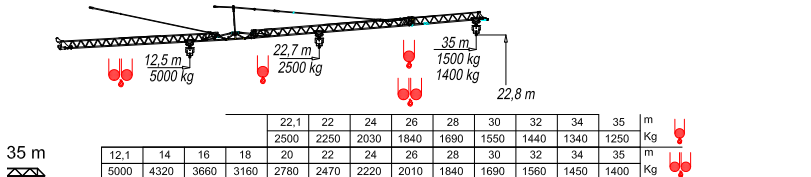
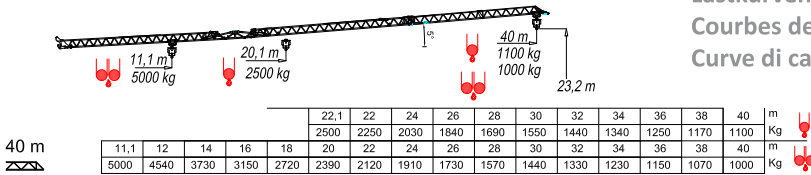
	m/min	15	30	55	7.5	15	27.5
	Kg	2500	1000	600	5000	2000	1200
	Kw	11	11	11	11	11	11
	m/min	22	44	22	38		
	Kg	2500	1000	5000	2000		
	Kw	4	4	4	4		
	m/min	22	44	22	38		
	Kg	2500	1000	5000	2000		
	r.p.m	0,25	0,5	0,8	0,25	0,5	0,8
	N.m	30			30		
	Kw	4			4		

- Elevación / Holsting / Heben / Levage / Sollevamento
- Distribución / Trolleying / Kätzfahren / Distribution / Distribuzione
- Orientación / Slewing / Schwenken / Orientation / Rotazione
- Montaje / Erection / Montage / Montage / Montaggio

		400 V	40 kVA	4x10mm <sup>2</sup>
2000V+CEE	2000V+CEE	50-60 Hz		

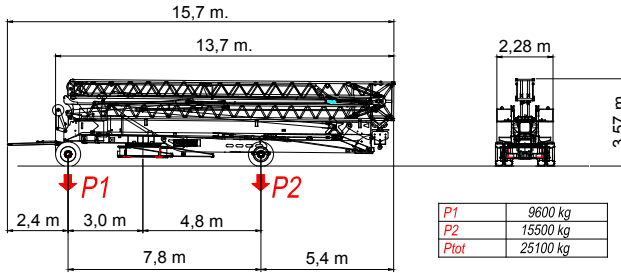
**Mecanismos**  
**Mechanisms**  
**Antriebe**  
**Mécanismes**  
**Meccanismi**

**Curvas de cargas**  
**Load diagrams**  
**Lastkurven**  
**Courbes de charges**  
**Curve di carico**

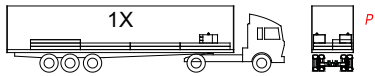


**Flacha izada**  
**Luffing jib**  
**Ausleger in steilstellung**  
**Flèche relevée**  
**Braccio impennato**

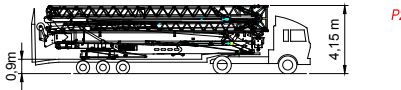
Transporte  
Transport  
Zufuhr  
Transport  
Trasporto



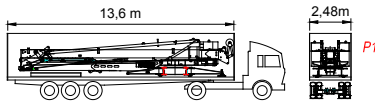
P1	9600 kg
P2	15500 kg
Plot	25100 kg



P1	22250 kg
P2	24100 kg
Plot	46350 kg



**1X GONDOLA 0,9m**



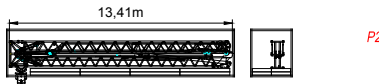
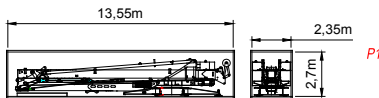
P1	22350 kg
P2	24000 kg
Plot	46350 kg

**2X STANDARD TRAILER**



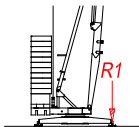
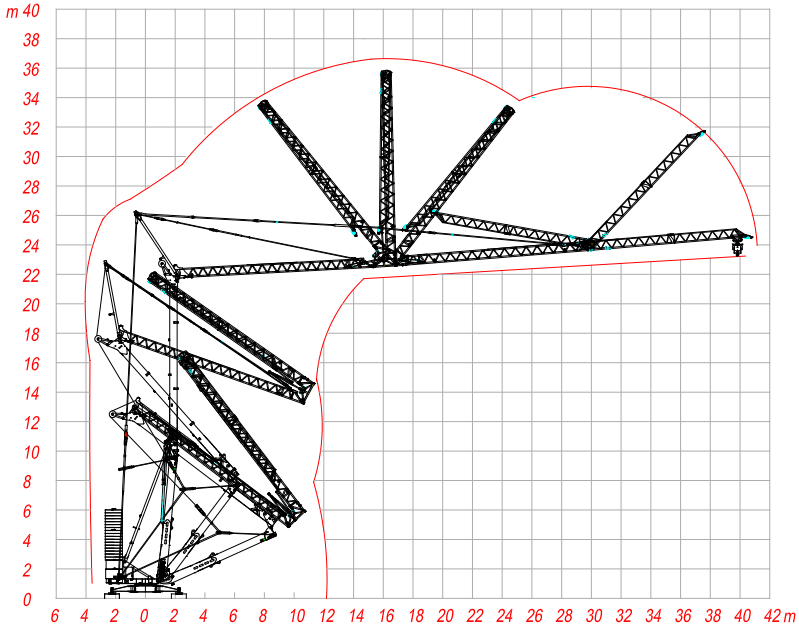
P1	22350 kg
P2	24000 kg
Plot	46350 kg

**2X HIGH CUBE 45'**

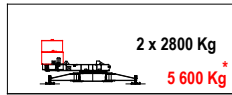


## I

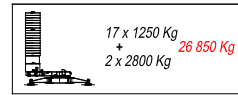
Montaje  
Erection  
Montage  
Montage  
Montaggio



R1 ● 30 t    ◻ 22 t  
Z ▲ 18,5 t    ◻ 26,85 t



Peso de lastre de montaje



Peso de lastre total

- Reacciones en servicio / Reactions in service / Reaktionskräfte in betrieb / Réactions in service / Reazioni in servizio
- ◻ Reacciones fuera de servicio / Reactions out of service / Reaktionskräfte außer betrieb / Réactions hors service/ Reazioni fuori servizio
- ▲ Peso de la grúa sin tren de transporte y sin lastre / Dead weight without transport axles and without ballast / Kontruktionsgewicht ohne transportachse ohne ballast / Poids de construction sans essieux et sans lest / Peso della gru senza assali e senza zavorra
- ◻ Peso de lastre / Ballast weight / Ballastgewicht / Poids du lest / Peso zavorra rotante
- \* Peso de lastre de montaje / Ballast weight of erection / Ballastgewicht / Poids du lest de montage/ Peso zavorra rotante di montaggio